

CONCERT ATTIRE

BY TUXEDO WHOLESALER

AUGUST 2025 - 2026

CLASSIC
FLATTERING
LOOKS

AFFORDABLE
DURABLE
FABRICS



Order Online:
[tuxedowholesaler.com](https://www.tuxedowholesaler.com)

Call toll free
1-800-828-2802

GLORIANA B Show Choir Dress



page 53

We thank our many loyal customers and welcome new friends to our 42nd edition of **TUXEDO WHOLESALER'S Concert Attire.**

We strive to maintain consistent, high-quality products while working tirelessly to be an affordable performance attire source.

All gowns are proudly made in the U.S.A.



REDI-SHIP PROGRAM

GET IT FAST! Choose your delivery method to receive your REDI-SHIP items in 2-10 business days.

Redi-ship gowns are available in our black preferred fabric only, in regular length sizes 0-28.

All gowns are delivered unhemmed with a finished edge. Regular length gowns accommodate heights up to 5'8" tall.

Long and extra long gowns require an extra two weeks for delivery and will incur an additional \$10.00 charge for each gown.



Tuxedo Wholesaler®

1331 West Melinda Lane
Phoenix, AZ 85027

Toll Free: 800-828-2802
Toll Free Fax: 888-456-2233

TABLE of CONTENTS

WOMEN'S WEAR

- REDI-SHIP Quick Reference Guide 4-7
- Basics & Beyond 8
- Unisex items 9
- REDI-SHIP gowns 10-23
- Luxe & Glam 24-35
- Short Dresses 36-37
- Separates 38-41
- Separates Packages 42-43
- Jewelry 44-45
- Show Choir 46-53
- REDI-SHIP Show Choir 47
- Accessories 54-55

MEN'S WEAR

- Unisex Polo Packages 56-57
- Tuxedo Packages 58-59
- Suit Packages 60-61
- Menswear Packages 62-64
- Blazers 65
- Vests 66-69
- Separates 70-71
- Rental Program 72-73
- Accessories 74-77
- How to Measure 78
- General Information, Order Forms, Theatrical Information 79
- Measurement Forms 80-83

Follow Us:



@TuxedoWholesaler

tuxedowholesaler.com



DELUXE SIGNATURE PACKAGE



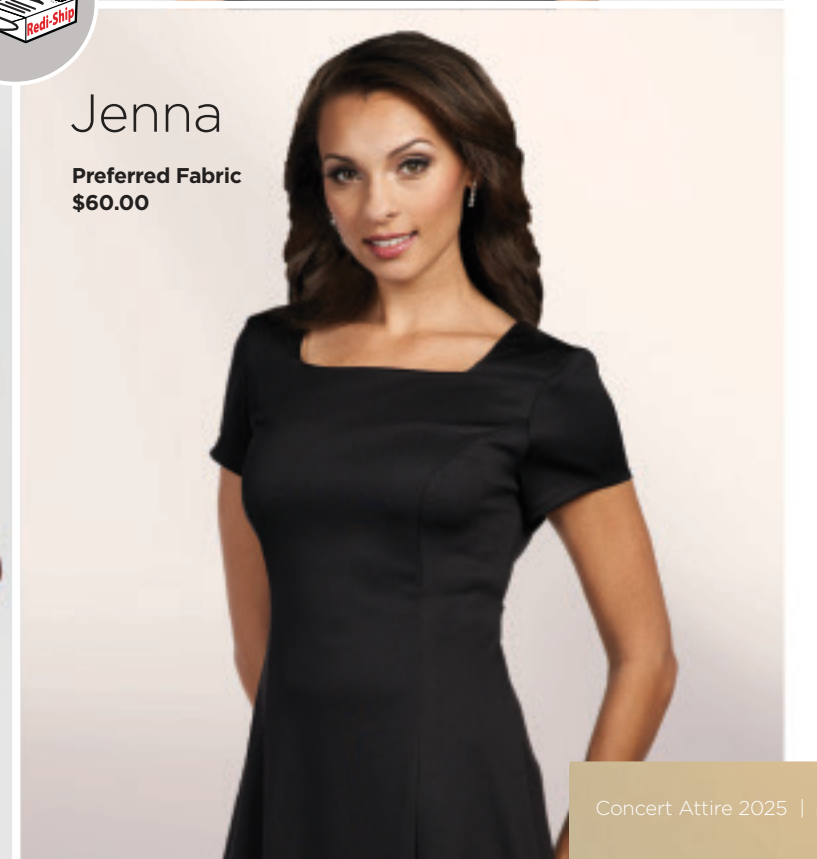
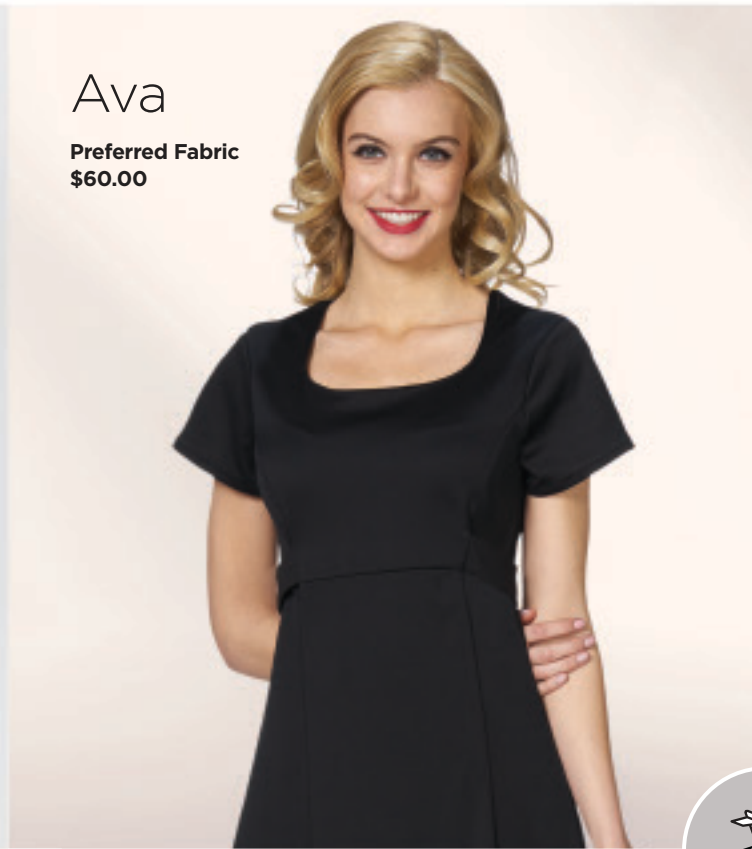
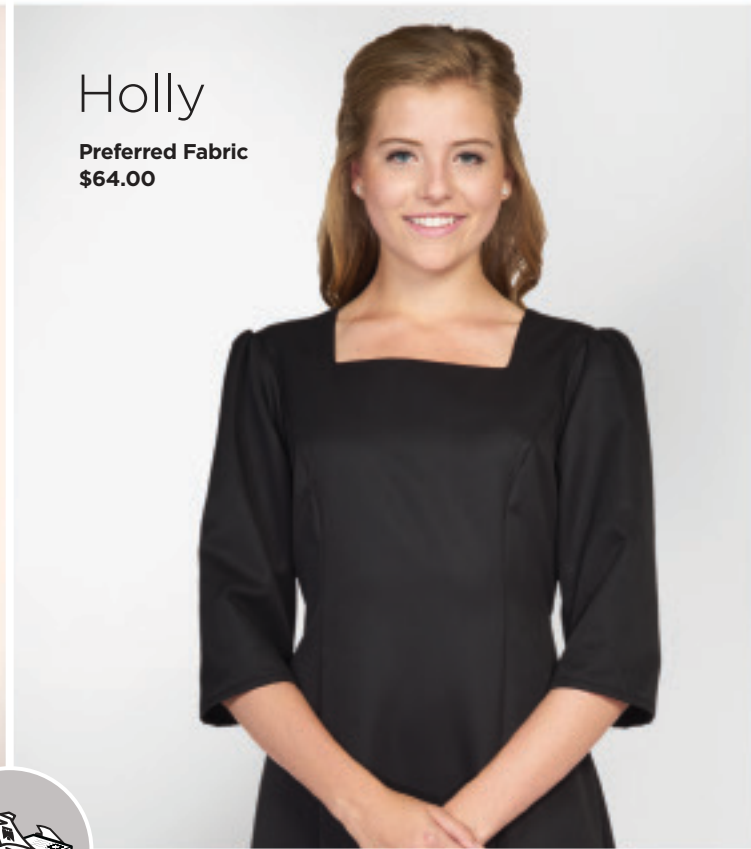
pages 62

GET IT FAST! REDI-SHIP GOWN

Choose your delivery method to receive your REDI-SHIP items in 2-10 business days. REDI-ship gowns are available in black preferred fabric only, in regular length adult sizes 0-28.

QUICK REFERENCE GUIDE

All gowns are delivered unhemmed with a finished edge. Regular length gowns accommodate heights up to 5'8" tall. Long and extra-long gowns require an extra two weeks for delivery and will incur an additional \$10.00 charge for each gown.

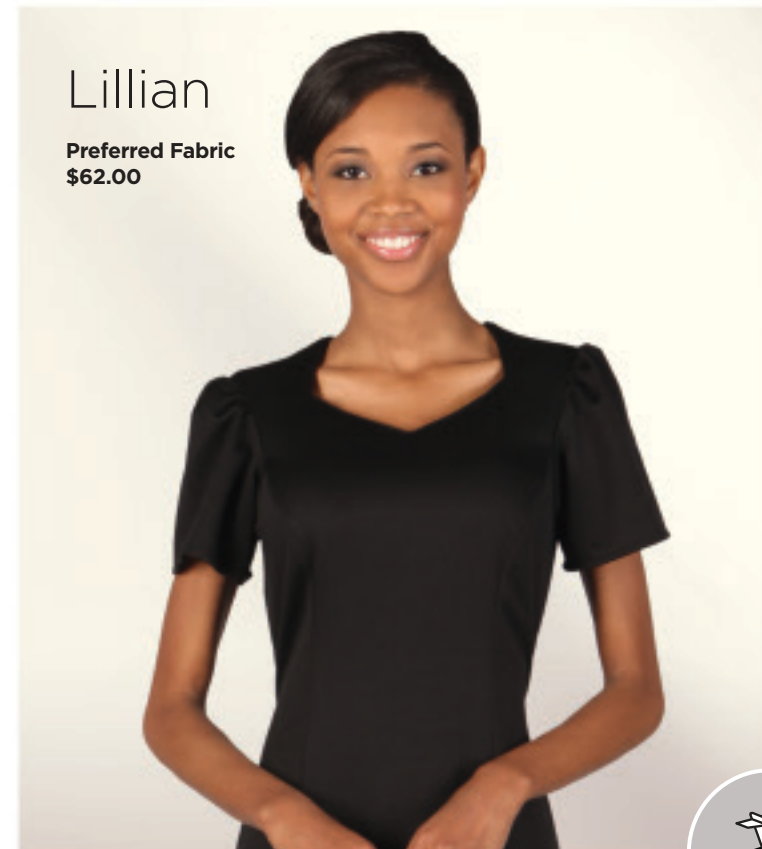


GET IT FAST! REDI-SHIP GOWN

Choose your delivery method to receive your REDI-SHIP items in 2-10 business days. REDI-ship gowns are available in black preferred fabric only, in regular length adult sizes 0-28.

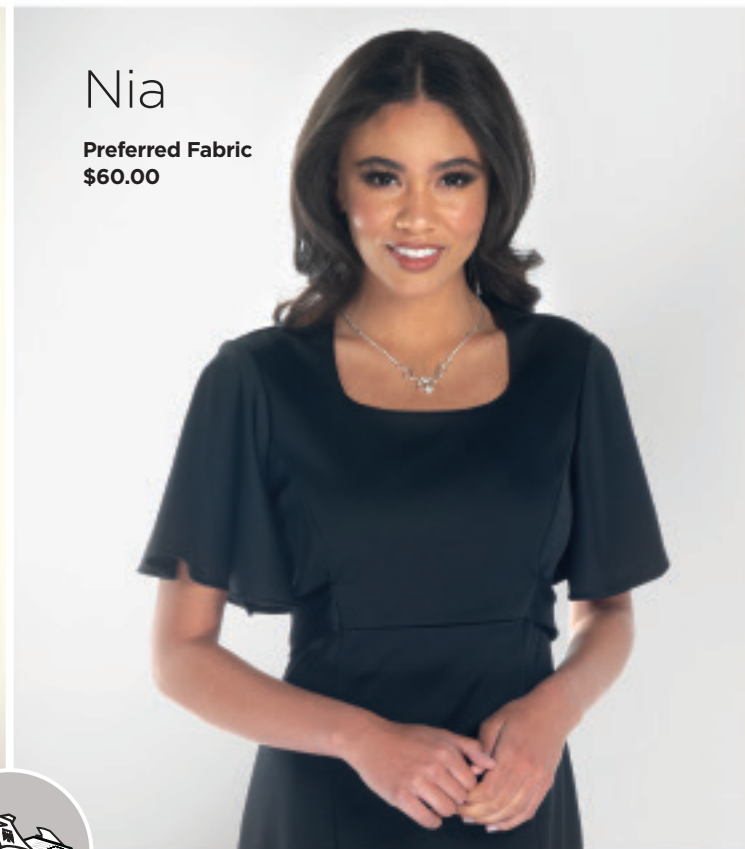
QUICK REFERENCE GUIDE

All gowns are delivered unhemmed with a finished edge. Regular length gowns accommodate heights up to 5'8" tall. Long and extra-long gowns require an extra two weeks for delivery and will incur an additional \$10.00 charge for each gown.



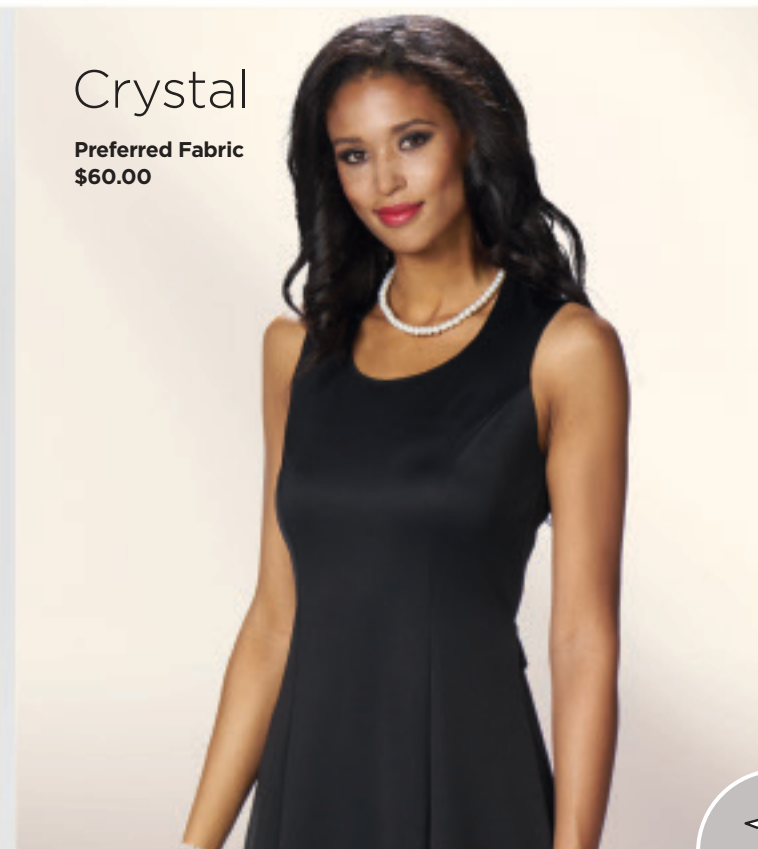
Lillian

Preferred Fabric
\$62.00



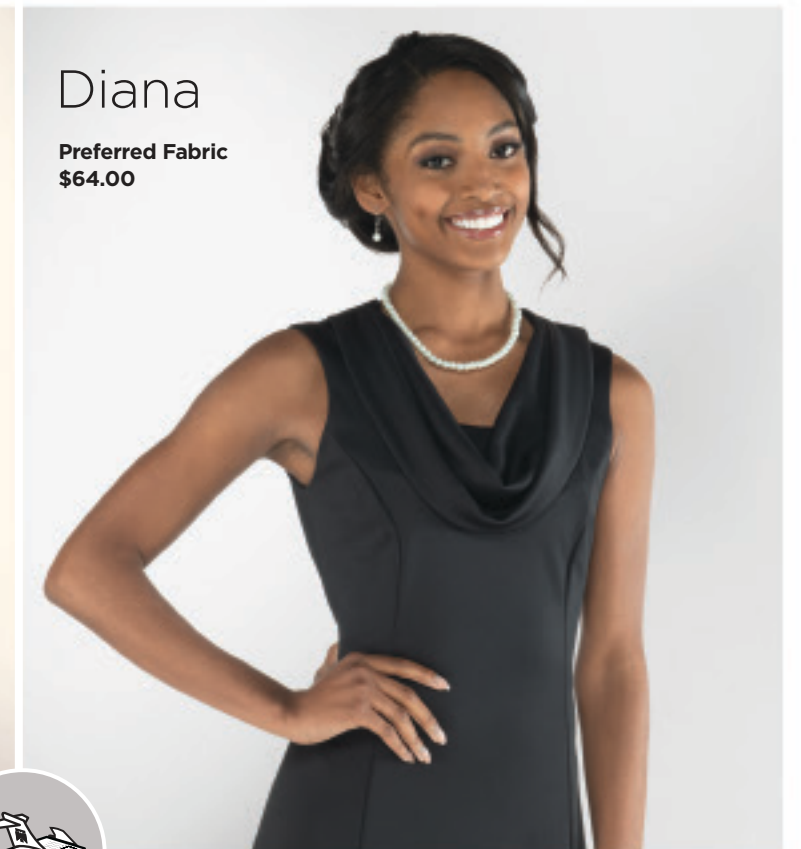
Nia

Preferred Fabric
\$60.00



Crystal

Preferred Fabric
\$60.00



Diana

Preferred Fabric
\$64.00



Yvette

Preferred Fabric
\$60.00



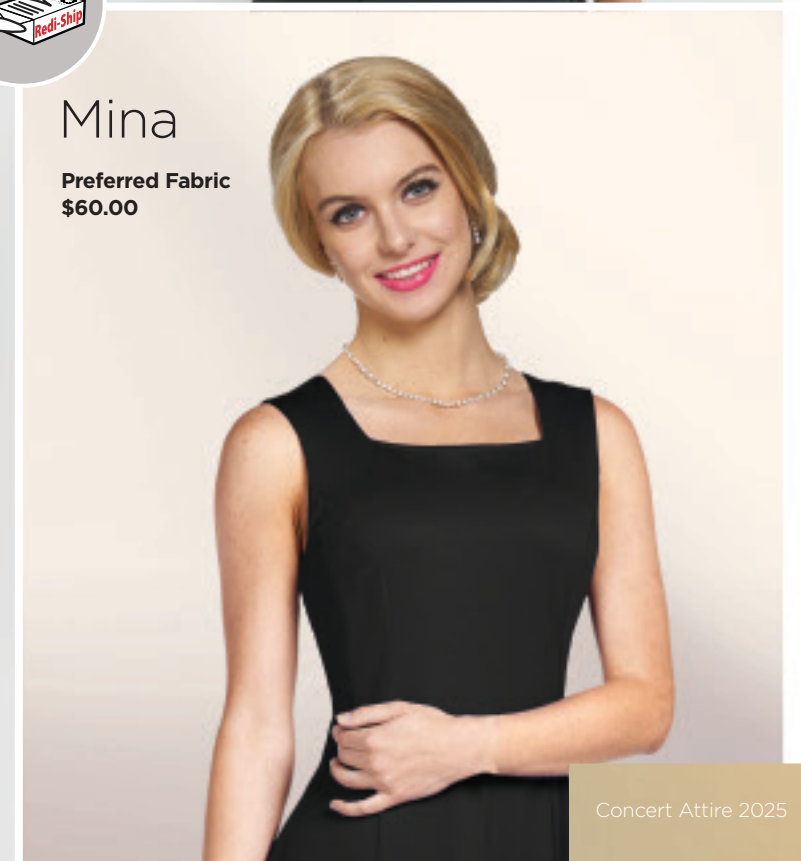
Ashley

Preferred Fabric
\$64.00



Karen

Preferred Fabric
\$62.00



Mina

Preferred Fabric
\$60.00

Basics *and* Beyond



Bring back perfect performances this year with some of our most popular, basic styles (A, B) or go big and beyond with our newest, updated looks (C, D).

A. Basic Notch Lapel Tuxedo Package

Notch or Peak Satin lapel jacket, Com-fit pleated or flat front adjustable waist pants, white wing collar shirt, black bow tie and cummerbund.

Basic Tuxedo Package / \$104.00

B. Our **Morgan** gown is elegant and feminine with its rounded diamond neckline and three-quarter sleeves. Available in adult, tween and children's sizes.

Preferred Fabric / \$60.00

C. Our **Kelsey** gown is an empire waist gown with an invisible zipper and fitting ties in back. It features a luxurious, stretch velvet bodice, either half (front only) or full (front and back). Gown bottom is available in our wrinkle-resistant preferred knit fabric in black or royal blue.

Available in adult, children's and tween sizes.

Ships in 4 weeks.

Kelsey Front Only Velvet Bodice / \$68.00

Kelsey Full Velvet Bodice / \$74.00

D. Modern Fit Suit Package

Black or grey 2-button poly, Modern-Fit suit coat, matching flat front Flex-Fit adjustable waist dress pants, black or white poly/cotton dress shirt and your choice of color Windsor Tie.

Modern Fit 2-Button Suit Package / \$102.00

E. Quinn Unisex Polo

Make concert attire easy, casual and affordable with our Quinn Unisex Polo. Available in our Preferred fabric, this polo-style shirt has short sleeves, a V-neck, and fold over collar. The perfect length makes this shirt a breeze to either tuck in or leave out. Machine wash/tumble dry.

Men's and women's sizes XS-8XL.

Ships within four weeks.

Preferred Fabric / \$26.00

UNISEX ITEMS

Quinn Polo

For package info see pages 43 & 56



Angelique



A



A

REDI-SHIP

Sizes 0 thru 28 in black only.

Get It Fast!

Choose your delivery method to receive your **REDI-SHIP** items in 2-10 business days.

Long, extra-long gown lengths and all other sizes ship within 4 weeks.

Black Preferred Fabric / \$60.00

A. Angelique is a simple, comfortable and conservative gown with a scoop neck and long sleeves. It features an invisible zipper in the back and can be made with or without fitting ties. Made to order in adult, tween and children's sizes except for black preferred **REDI-SHIP** gowns.

Preferred Fabric / \$60.00

Crepe Fabric / \$72.00

Elegance Satin Fabric / \$72.00

B. Our beautiful **Ashley** gown has a sweetheart neckline with a deep V back. The princess line gown also features fitting ties and an invisible zipper in back for a perfect waistline fit. The wide gathered shoulder straps give this gown just the right amount of arm coverage. Made to order in adult sizes 0 through 28 only.

Preferred Fabric / \$64.00

Crepe Fabric / \$74.00

Elegance Satin Fabric / \$74.00

PREFERRED



CREPE



ELEGANCE



All fabrics and colors ship within four weeks except for black, preferred **REDI-SHIP** gowns.

All fabrics, unless otherwise noted, are 100% machine wash and dry polyester.

Ashley



B



B

REDI-SHIP

Sizes 0 thru 28 in black only.

Get It Fast!

Choose your delivery method to receive your **REDI-SHIP** items in 2-10 business days.

Long, extra-long gown lengths and all other sizes ship within 4 weeks.

Black Preferred Fabric / \$64.00



Ava



A

Jewelry sets available
Pages 44 and 45

A



REDI-SHIP

Sizes 0 thru 28 in black only.

Get It Fast!

Choose your delivery method to receive your **REDI-SHIP** items in 2-10 business days.

Long, extra-long gown lengths and all other sizes ship within 4 weeks.

Black Preferred Fabric / \$60.00

Caitlen



B

A. *Ava* is a no-fuss pullover gown that represents simplicity, comfort and style. It's rounded neckline and short sleeves are available in all colors of our preferred fabric. Made to order in adult, tween and children's sizes.

Preferred Fabric / \$60.00

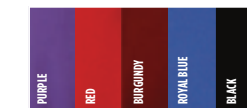
B. The sweetheart neckline, cap sleeves and princess line styling make the **Caitlen** gown a favorite choice among performers. Fitting ties and an invisible zipper in back give the gown a perfect fit. Made to order in adult, tween and children's sizes.

Preferred Fabric / \$60.00

Crepe Fabric / \$72.00

Elegance Fabric / \$72.00

PREFERRED



CREPE



ELEGANCE



All fabrics and colors ship within four weeks except for black, preferred **REDI-SHIP** gowns.

All fabrics, unless otherwise noted, are 100% machine wash and dry polyester.

REDI-SHIP

Sizes 0 thru 28 in black only.

Get It Fast!

Choose your delivery method to receive your **REDI-SHIP** items in 2-10 business days.

Long, extra-long gown lengths and all other sizes ship within 4 weeks.

Black Preferred Fabric / \$60.00

Crystal



A

A

REDI-SHIP

Sizes 0 thru 28 in black only.

Get It Fast!

Choose your delivery method to receive your **REDI-SHIP** items in 2-10 business days.

Long, extra-long gown lengths and all other sizes ship within 4 weeks.

Black Preferred Fabric / \$60.00

Dakota



B

B

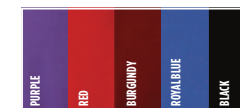
A. Crystal is our most popular sleeveless gown. The rounded scoop neckline and princess waistline make this gown flattering and comfortable. An invisible zipper and fitting ties in the back give it a perfect fit. Available in our preferred knit fabric in adult, tween and children's sizes.

Preferred Fabric / \$60.00

B. The elegant and soft, sweetheart neckline and short sleeves of the **Dakota** gown make it one of our best sellers. Available in all colors of our preferred fabric. Made to order in adult, tween and children's sizes.

Preferred Fabric / \$60.00

PREFERRED



All fabrics and colors ship within four weeks except for black, preferred **REDI-SHIP** gowns.

All fabrics, unless otherwise noted, are 100% machine wash and dry polyester.

REDI-SHIP

Sizes 0 thru 28 in black only.

Get It Fast!

Choose your delivery method to receive your **REDI-SHIP** items in 2-10 business days.

Long, extra-long gown lengths and all other sizes ship within 4 weeks.

Black Preferred Fabric / \$60.00

Diana



Karen



A. Diana is a scoop neckline gown with a preferred fabric drape neckline accent. It is complimented by a sleeveless, princess line style and fitting ties in the back. Available in adult, tween and children's sizes.

Preferred Fabric / \$64.00

B. Karen is an elegant, sleeveless princess line gown with a sweetheart neckline, two inch shoulder straps and fitting ties in the back. Available in adult, tween and children's sizes.

Preferred Fabric / \$62.00

C. The Holly gown represents simple elegance and style with a square neckline and slightly gathered, three-quarter sleeves. It features an invisible zipper and fitting ties in back for a perfect fit. Available in adult, tween and children's sizes.

Preferred Fabric / \$64.00

Crepe Fabric / \$74.00

Elegance Fabric / \$74.00

PREFERRED



CREPE



ELEGANCE



All fabrics and colors ship within four weeks except for black, preferred **REDI-SHIP** gowns.

All fabrics, unless otherwise noted, are 100% machine wash and dry polyester.

Holly



REDI-SHIP

Sizes 0 thru 28 in black only.

Get It Fast!

Choose your delivery method to receive your **REDI-SHIP** items in 2-10 business days.

Long, extra-long gown lengths and all other sizes ship within 4 weeks.

Black Preferred Fabric / \$64.00

Jenna



A



A

REDI-SHIP

Sizes 0 thru 28 in black only.

Get It Fast!

Choose your delivery method to receive your **REDI-SHIP** items in 2-10 business days.

Long, extra-long gown lengths and all other sizes ship within 4 weeks.

Black Preferred Fabric / \$60.00

A. The **Jenna** gown is a beautiful princess style gown with a square neckline and cap sleeves. It features an invisible zipper and fitting ties in back for a perfect fit. Made to order in adult, tween and children's sizes.

Preferred Fabric / \$60.00

B. The **Lillian** gown features a diamond-shaped neckline and slightly gathered short sleeves. An invisible zipper and fitting ties in back give this princess line gown a perfect waistline fit. Made to order in adult, tween and children's sizes.

Preferred Fabric / \$62.00

PREFERRED



All fabrics and colors ship within four weeks except for black, preferred **REDI-SHIP** gowns.

All fabrics, unless otherwise noted, are 100% machine wash and dry polyester.

Lillian



B

B



B



REDI-SHIP

Sizes 0 thru 28 in black only.

Get It Fast!

Choose your delivery method to receive your **REDI-SHIP** items in 2-10 business days.

Long, extra-long gown lengths and all other sizes ship within 4 weeks.

Black Preferred Fabric / \$62.00

Michaela

Jewelry sets available
Pages 44 and 45



A



A

REDI-SHIP

Sizes 0 thru 28 in black only.

Get It Fast!

Choose your delivery method to receive your **REDI-SHIP** items in 2-10 business days.

Long, extra-long gown lengths and all other sizes ship within 4 weeks.

Black Preferred Fabric / \$60.00

Mina



B

Morgan



C



A. The **Michaela** gown is classy and sleek with its rounded neckline and three-quarter sleeves. Available in adult, tween and children's sizes.

Preferred Fabric / \$60.00

B. Our **Mina** gown features a square neckline and sleeveless design with 3-inch shoulder straps. An invisible zipper and fitting ties in back give the gown a perfect waistline fit. Made to order in adult, tween and children's sizes.

Preferred Fabric / \$60.00

Crepe Fabric / \$72.00

Elegance Fabric / \$72.00

C. Our **Morgan** gown is elegant and feminine with its rounded diamond neckline and three-quarter sleeves. Available in adult, tween and children's sizes.

Preferred Fabric / \$60.00

PREFERRED



CREPE



ELEGANCE



All fabrics and colors ship within four weeks except for black, preferred **REDI-SHIP** gowns.

All fabrics, unless otherwise noted, are 100% machine wash and dry polyester.

Nia



A

A

REDI-SHIP

Sizes 0 thru 28 in black only.

Get It Fast!

Choose your delivery method to receive your **REDI-SHIP** items in 2-10 business days.

Long, extra-long gown lengths and all other sizes ship within 4 weeks.

Black Preferred Fabric / \$60.00

Yvette



- A. The beautiful flared sleeves and soft, square neckline make the **Nia** gown a fashionable favorite. Available in adult, tween and children's sizes.

Preferred Fabric / \$60.00

- B. The **Yvette** gown has a square neckline with a glamorous flutter sleeve for style and comfort. It features an invisible zipper and fitting ties in the back for a flattering fit on any body type. Made to order in adult, tween and children's sizes.

Preferred Fabric / \$60.00



B

B

REDI-SHIP

Sizes 0 thru 28 in black only.

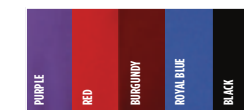
Get It Fast!

Choose your delivery method to receive your **REDI-SHIP** items in 2-10 business days.

Long, extra-long gown lengths and all other sizes ship within 4 weeks.

Black Preferred Fabric / \$60.00

PREFERRED



All fabrics and colors ship within four weeks except for black, preferred **REDI-SHIP** gowns.

All fabrics, unless otherwise noted, are 100% machine wash and dry polyester.

LUXE & GLAM

The following gowns are some of our most fashionable and glamorous pieces. They are all made to order and are available in various fabrics and colors. Please allow four weeks for delivery on all items in this section.

Jordan

Eden



A

Cadena Necklace
Available on page 44



B

Blake



C

A. The **Jordan** gown features classical princess line styling with a sculptured sweetheart neckline. An invisible zipper and fitting ties in the back give this gown a perfect fit. Made to order in adult, children's and tween sizes.

Preferred Fabric / \$64.00

Crepe Fabric / \$72.00

Elegance Fabric / \$72.00

B. The **Eden** gown is a square neckline, cap sleeve, empire waist gown. It is accented with a feminine yet durable black lace trim across the neckline and waist with an invisible zipper. Made to order in adult sizes 0 through 40 only in wrinkle-resistant preferred knit black fabric.

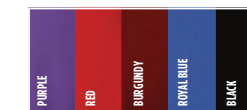
Preferred Fabric / \$64.00

C. The **Blake** gown has a fashionable asymmetrical neckline. It is a pullover gown with a pleated shoulder accent. Fitting ties in the back give this gown a perfect waistline fit. Gown available in our wrinkle-resistant preferred fabric. Trim available in either preferred fabric or in elegance satin.

Preferred Fabric with Preferred Trim / \$60.00

Preferred Fabric with Elegance Trim / \$66.00

PREFERRED



CREPE



ELEGANCE



All fabrics and colors ship within four weeks

All fabrics, unless otherwise noted, are 100% machine wash and dry polyester.

LUXE & GLAM

Luna

A



A. The **Luna** gown is one of our most comfortable and glamorous gowns. Layers of black preferred fabric and our silver Ity glitter make this gown a show-stopper! It is a pull over gown with cap sleeves and side slits on the over-bodice for convenient arm mobility. Available in adult, tween and children's sizes.

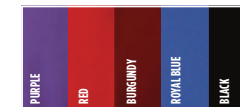
**Preferred Black Fabric/
Silver Ity Glitter / \$82.00**

B. The flattering lines of our **Maya** gown are perfect for any body type. The simplicity of the rounded neckline and long sleeves make it comfortable, practical and affordable. Available in adult, children's and tween sizes.

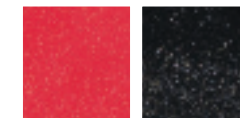
Outer panels of the gown are available in black preferred only. Inner colored panel available in purple, red, burgundy or royal blue preferred fabric.

**Preferred Fabric
\$66.00**

PREFERRED



ITY GLITTER



Red

Black

Ity glitter to be hand washed or dry cleaned only.

All fabrics and colors ship within four weeks.

All fabrics, unless otherwise noted, are 100% machine wash and dry polyester.

Maya

B



LUXE & GLAM



Cheyenne

Bailey



Larissa



Kelsey



There are four empire waist gowns shown here with invisible zippers and fitting ties in the back. They also feature a versatile stretch velvet bodice, either half (front only) or full (front and back). The gown bottom is available in our wrinkle-resistant preferred knit fabric in black or royal blue only. Available in adult, children's and tween sizes.

Front Only Velvet Bodice \$68.00

Full Velvet Bodice \$74.00



All fabrics and colors ship within four weeks.

All fabrics, unless otherwise noted, are 100% machine wash and dry polyester.

LUXE & GLAM

Olivia

Kendall



Victoria

A. Olivia has a soft, sweetheart neckline and 3/4 bell sleeves. Available in preferred fabric only in adult, children's and tween sizes. Machine wash/dry.

Preferred Fabric / \$64.00

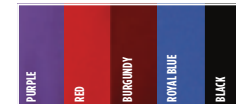
B. Kendall is a very unique looking gown with a rounded neckline and short, butterfly wing sleeves. One inch neckline and sleeve trim. Trim is available in all fabrics and colors. Machine wash/dry. Available in adult, children's and tween sizes.

Preferred Fabric / \$64.00

C. Victoria has a rounded neckline and 1/2 length bell sleeves. Add a bit of color and/or texture with a one inch sleeve trim. Trim available in all fabrics and colors. Machine wash/dry. Available in adult, children's and tween sizes. Ships within four weeks.

Preferred Fabric / \$64.00

PREFERRED



All fabrics and colors ship within four weeks.

All fabrics, unless otherwise noted, are 100% machine wash and dry polyester.

LUXE & GLAM

Jocelyn



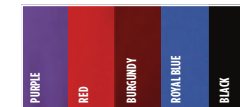
A. The **Jocelyn** gown is simple and chic with a rounded neckline and cap sleeves. Available in adult, tween and children's sizes.

Preferred Fabric / \$60.00

B. A square neckline in front and a deep "V" in back add elegance to this sleeveless, princess line gown. Fitting ties in back give the **Savannah** a perfect fit. Available in Preferred fabric and is accented by a colorful fashion fabric trim. Choose from our Logan, signature red satin, Elegance or Crepe fabrics for the perfect match. Made to order in adult sizes 0 through 40 only.

Preferred Fabric / \$64.00

PREFERRED



Trim Options:

CREPE



ELEGANCE



SIGNATURE RED SATIN



LOGAN



All fabrics and colors ship within four weeks.

All fabrics, unless otherwise noted, are 100% machine wash and dry polyester.

Savannah



LUXE & GLAM



Sara



A. The Sara and Laurel gowns both feature a waistline ribbon to highlight the beauty of these princess line gowns with fitting ties and invisible zippers. Mix and match gown and ribbon colors in any of the three fabrics below.

Made to order in adult, tween and children's sizes.

Preferred Fabric / \$70.00

Crepe Fabric / \$78.00

Elegance Fabric / \$78.00

Gown Fabric Options:

PREFERRED



CREPE



ELEGANCE



SIGNATURE RED SATIN



Trim Options:

ADAGIO



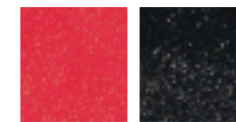
Gold Green

GLITTER KNIT



Galaxy

ITY GLITTER



Red Black

Ity glitter to be hand washed or dry cleaned only.

All fabrics and colors ship within four weeks.

All fabrics, unless otherwise noted, are 100% machine wash and dry polyester.

Laurel



SHORT DRESSES

Our Short Dresses are fun and stylish with knee length, pullover designs and fitting ties in the back.

Made to order in adult, tween and children's sizes in our preferred knit fabric.

Adult Dress

Average Length: 40"

Children's Dress

Average Length: 32.5"

\$56.00

REDI-SHIP

Sizes 0 thru 28 in black only.

Get It Fast!

Choose your delivery method to receive your **REDI-SHIP** items in 2-10 business days.

Long, extra-long gown lengths and all other sizes ship within 4 weeks.

Black Preferred Fabric / \$56.00

Abby



Frankie



Katie

Simone



A. Abby is our most popular short dress with its sweetheart neckline and short sleeves. Available as a REDI-SHIP item in black preferred fabric, adult sizes 0 through 28 only. All other sizes and colors ship within four weeks.

B. Frankie is cool and simple with its rounded neckline and sleeveless look. Available as a REDI-SHIP item in black preferred fabric, adult sizes 0 through 28 only. All other sizes and colors ship within four weeks.

C. Katie is a sleeveless pullover dress with a sweetheart neckline. Fitting ties in back give this dress a perfect waistline fit. Ships within four weeks

D. Simone is a classical dress with an empire waistline fit. It has a simple rounded neckline and short sleeves. Ships within four weeks.

PREFERRED



All fabrics, unless otherwise noted, are 100% machine wash and dry polyester.

SEPARATES BLOUSES

All blouses are available in sizes XS-8XL. Ships within four weeks.

PREFERRED



All fabrics, unless otherwise noted, are 100% machine wash and dry polyester.



Marquis

Short sleeves, rounded neckline, straight hem.

\$24.00



Demi

Short sleeves, sweetheart neckline, straight hem.

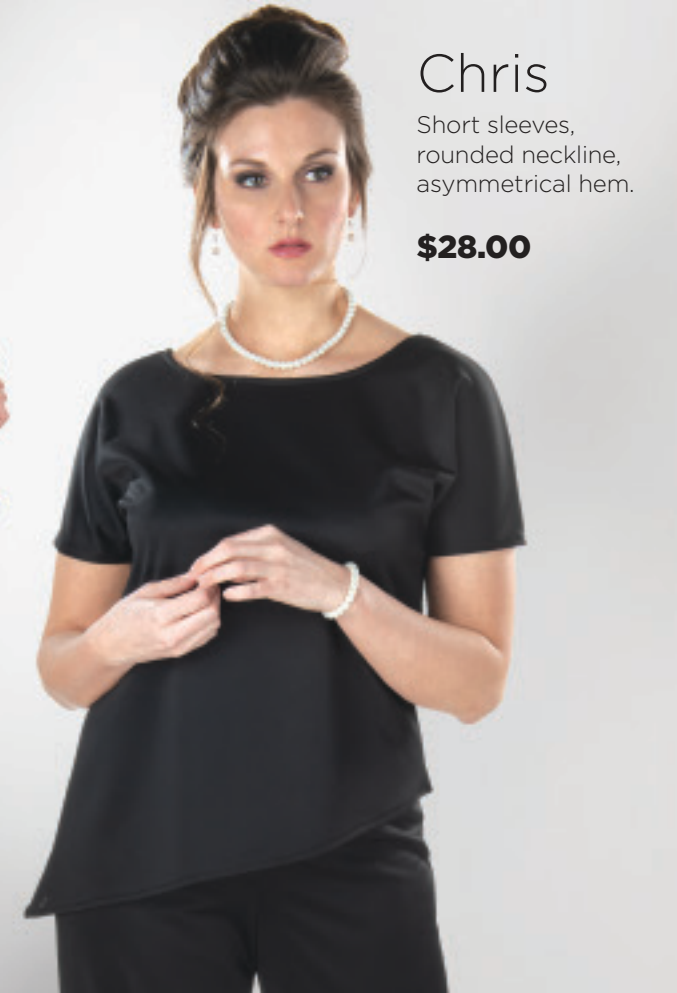
\$24.00



Copley

Long, trumpet style sleeves, rounded neckline, asymmetrical hem.

\$34.00



Chris

Short sleeves, rounded neckline, asymmetrical hem.

\$28.00

PANTS

Palazzo

Elastic waistband, wide width, full length pants.

Available in black preferred fabric only. Sizes XS-6XL. Ships within four weeks.

\$32.00



Palazzo Bello

Elastic waistband, wide width, full length pants in black Ity Glitter.

Sizes XS-6XL. Ships within four weeks.

\$42.00



Com-fit Flat Front

Adjustable waist, standard fit, full length pants.

See page 71 for sizing and shipping options.

\$26.00

SEPARATES SKIRTS

Cantata

Elastic waistband, slender cut, versatile back or side slit hem.

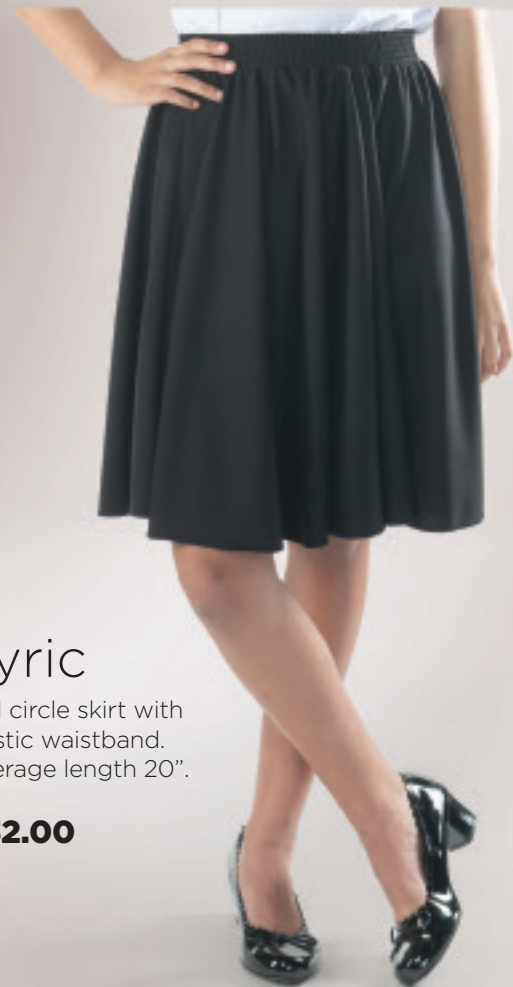
\$28.00



Circle

Full circle skirt with elastic waistband. Average length 28".

\$32.00



Lyric

Full circle skirt with elastic waistband. Average length 20".

\$32.00

SKIRTS

Symphony Concert

Our most popular full-length skirt with elastic waistband and A-line styling.

\$34.00



REDI-SHIP

Children's and adult sizes XS-4XL in black only.

Get It Fast!

Choose your delivery method to receive your **REDI-SHIP** items in 2-10 business days.

Long, extra-long skirt lengths and all other sizes ship within 4 weeks.

Symphony Concert Skirt | \$34.00

Wing Collar Blouse | \$17.00

Tie & Cummerbund | \$11.00

All skirts are available in our Preferred knit fabric in black only. Offered in children's sizes XS-4XL and adult sizes XS-8XL. Ships within 4 weeks.

Sequin Fashion Belt with Oval Buckle
page 62

SEPARATES PACKAGES BLOUSE/PANTS

UNISEX QUINN POLO



CHOOSE YOUR BLOUSE

- » Marquis
- » Demi
- » Chris
- » Quinn

CHOOSE YOUR PANTS

- » Com-Fit

**YOUR
CHOICE
\$42.00**

Shown Here:
(Left) Quinn Polo with Com-Fit Flat Front Pants,
(Right) Demi Blouse with Com-Fit Flat Front Pants.

CHOOSE YOUR BLOUSE

- » Marquis
- » Demi
- » Chris
- » Quinn

CHOOSE YOUR SKIRT

- » Symphony Concert
- » Lyric
- » Circle

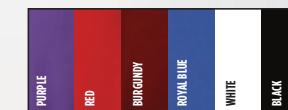
**YOUR
CHOICE
\$52.00**

PACKAGES BLOUSE/SKIRT



Shown Here:
(Left) Quinn Polo with Lyric Skirt,
(Right) Marquis Blouse with Circle Skirt.

PREFERRED



All fabrics, unless otherwise noted, are 100% machine wash and dry polyester.

JEWELRY

Add sparkle to your performance with quality rhinestone jewelry.



Cadena Rhinestone Necklace Set

Adjustable from 15.25" - 18.5". Includes a matching pair of 1/2" pierced earrings. **\$16.00**



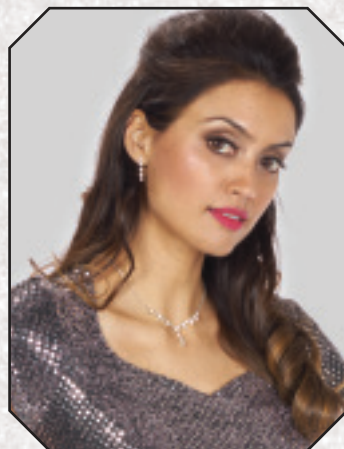
Treble Clef & Rhinestones Necklace Set

Pearl accents, adjusts from 15.5" to 17", pierced earrings **\$15.00**



Rhinestone Drop Necklace Set

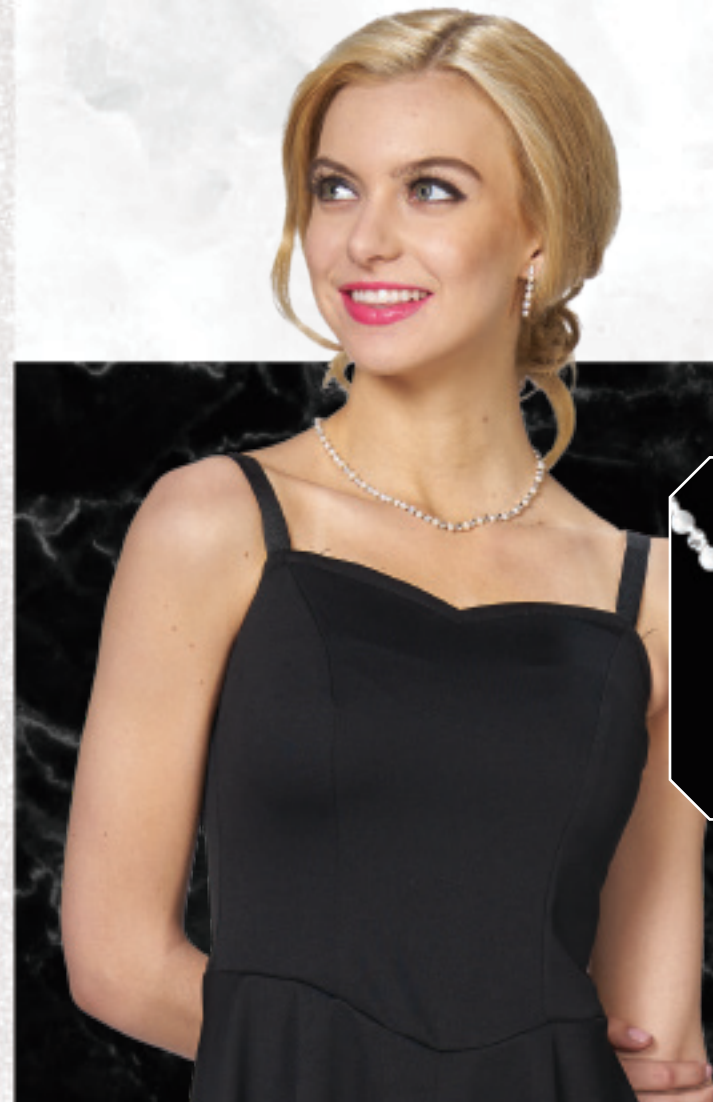
Adjusts from 14.5" to 18", matching pierced earrings are 1" long **\$14.00**



Set of Pearls

This complete set includes clasp necklace and French hook drop earrings.

\$14.00



Pearls & Rhinestones Necklace Set

Necklace is adjustable to 16", comes with 1" long pierced earrings.

\$16.00

SHOW CHOIR



A

B

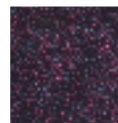
A. Lianna is an eye-catching, yet simple Show Choir dress. It features a square neckline, princess waistline and cap sleeves. Average knee length is 40". Available in preferred and glitter knit fabric in sizes XS - 8XL.

B. McKenna is a comfortable sleeveless, pullover dress. It features a scoop neckline and princess waistline. Average knee length is 40". Available in preferred and glitter knit fabric in sizes XS - 8XL.

C. Jayden features a fabulous, soft sweetheart neckline, pullover styling with a sleeveless, fitted bodice and a full circle skirt for easy movement. Average knee length is 40". Available in preferred and glitter knit fabric in sizes XS - 8XL.

Black Preferred Fabric / \$56.00
Glitter Knit / \$92.00

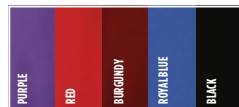
GLITTER KNIT



Galaxy

Hand wash or dry clean only

PREFERRED



REDI-SHIP processing available in black preferred fabric only, adult sizes 0-28. All other colors, fabrics and sizes ship within four weeks.

All fabrics, unless otherwise noted, are 100% machine wash and dry polyester.

Lianna

McKenna

Jayden



A



B



C

REDI-SHIP

Sizes 0 thru 28 in black only.

Get It Fast!

Choose your delivery method to receive your **REDI-SHIP** items in 2-10 business days.

Long, extra-long gown lengths and all other sizes ship within 4 weeks.

Black Preferred Fabric / \$56.00



Sydney



SHOW CHOIR

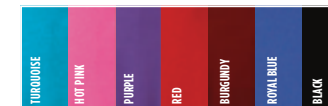
A. Feel like a fairy tale princess in our fabulous show choir dress, **Sydney**. A simple top with rounded neckline and short sleeves allow the asymmetrical handkerchief style bottom to steal the show. Available in all preferred colors in sizes XS - 8XL. Machine wash/dry.

Preferred Fabric / \$56.00

B. **Brooklyn** has a comfortable and flattering empire waist style with cap sleeves and an asymmetrical neckline with diamond sequin detail. Available in black preferred fabric with purple, blue or black diamond sequins. Available in sizes XS - 8XL. Machine wash, dry flat.

Preferred Fabric / \$60.00

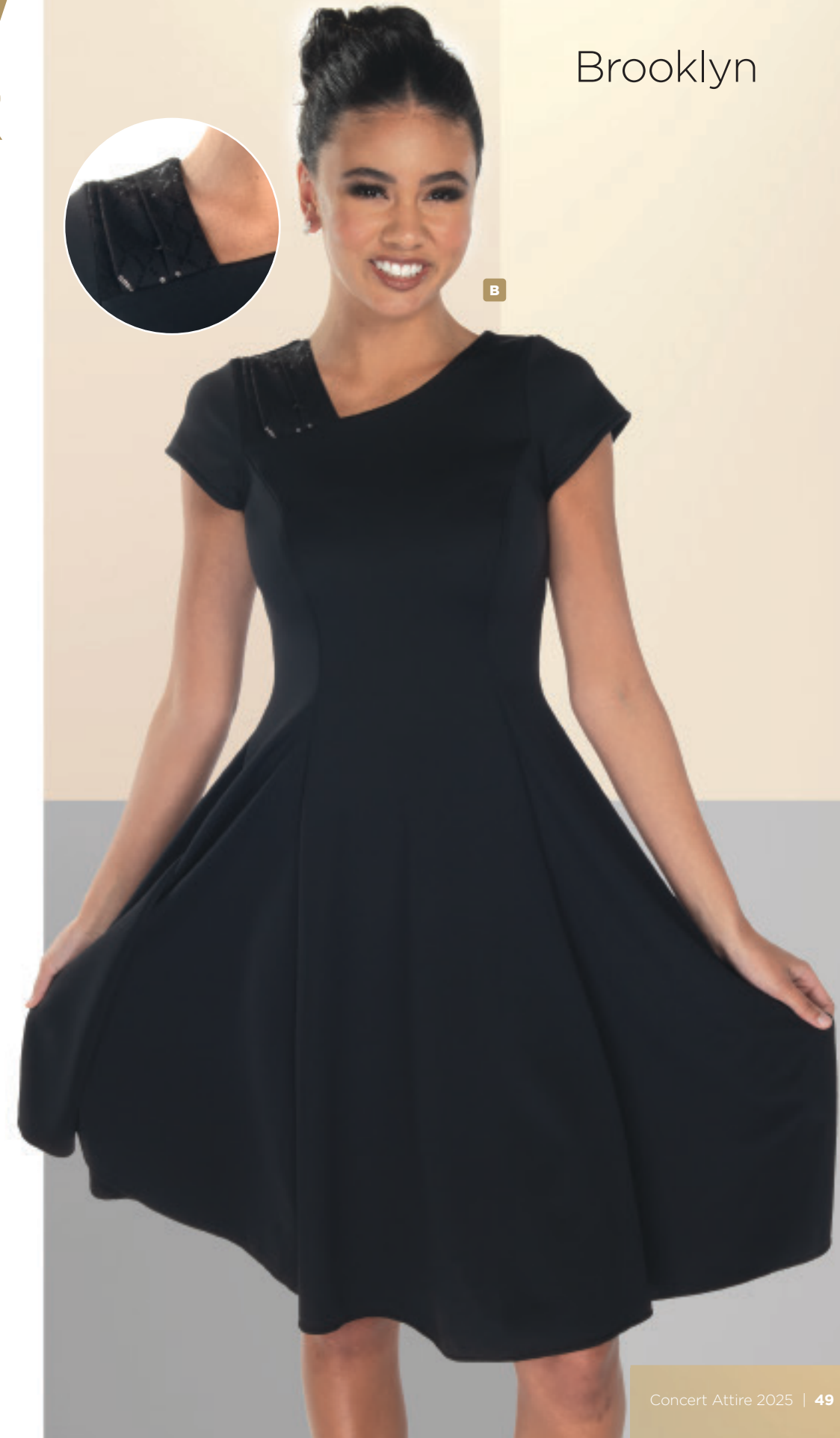
PREFERRED



All fabrics and colors ship within four weeks.

All fabrics, unless otherwise noted, are 100% machine wash and dry polyester.

Brooklyn



SHOW CHOIR

Penelope



Bella



Men's Vests
pages 66-69

Jewelry sets
available
Pages 44 and 45

A simplified look with the **Penelope** dress features our most popular preferred fabric skirt, with Ity Glitter bodice. The natural waistline makes for a flattering look and show stopping style.

Dazzle your audience with our "Ity Glitter" dresses. The **Bella** dress features glamour and comfort with a fully lined, durable, sparkle fabric.

Both dresses are made to order in adult sizes XXS - 26.
Ships within 4 weeks.

- Penelope** \$84.00
- Bella** \$114.00
- Matching Men's Vest** (page 68) \$65.00

ITY GLITTER



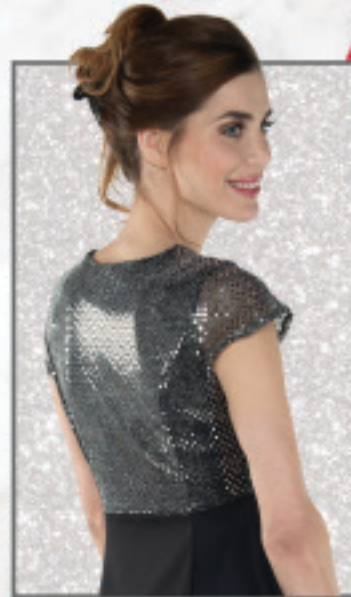
Red Black
Hand wash or dry clean only

SHOW CHOIR

Seneca **A**



Seneca **C**



Seneca **B**

Gloriana **A**



Gloriana **B**



Gloriana **C**

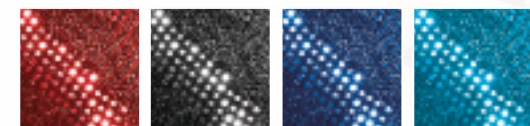


Add sparkle and flare to your Show Choir program with our **Seneca** Dresses. Available in three options, the Seneca dress features a soft diamond neckline, short sleeves and a flared skirt with an empire waistline. Choose from three different levels of coverage in our colorful sequin fabric.

All dresses are made to order in adult sizes XXS - 26. Ships within 4 weeks.

- | | | |
|---|--|---|
| Seneca A
Sequin front Bodice, Preferred knit back and skirt
\$64.00 | Seneca B
Sequin Bodice (front and back), preferred knit skirt.
\$79.00 | Seneca C
Preferred knit dress with full sequin overlay
\$104.00 |
|---|--|---|

SEQUIN



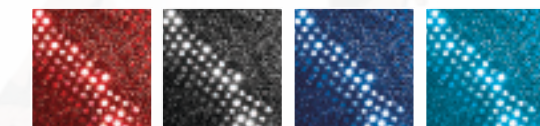
Red Silver Royal Turquoise
Hand-wash only, cold water, dry flat, no iron. Do not dry clean.

Our **Gloriana** dress is a true show stopper. Available in three options, the Gloriana dress features a rounded neckline, short sleeves and flared skirt with an empire waistline. Choose from three different levels of coverage in our colorful sequin fabric.

All dresses are made to order in adult sizes XXS - 26. Ships within 4 weeks.

- | | | |
|---|--|---|
| Gloriana A
Sequin front Bodice, Preferred knit back and skirt
\$64.00 | Gloriana B
Sequin Bodice (front and back), preferred knit skirt.
\$79.00 | Gloriana C
Preferred knit dress with full sequin overlay
\$104.00 |
|---|--|---|

SEQUIN



Red Silver Royal Turquoise
Hand-wash only, cold water, dry flat, no iron. Do not dry clean.

ACCESSORIES

All fashion belts are made to order in XS - 8XL with black, 4" adjustable Velcro closure.

Ships within 4 weeks.

Fashion Belt

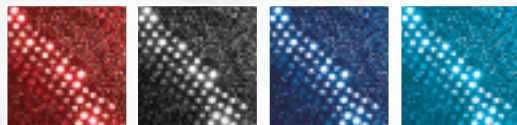
- Adagio Fabric** \$14.00
- Diamond Sequin Fabric** \$17.00
- Sequin Fabric** \$17.00
- Preferred Knit Fabric** \$14.00
- Stretch Velvet Fabric** \$17.00
- Glitter Knit Fabric** \$17.00
- Ity Glitter Fabric** \$17.00
- Add Oval Rhinestone Buckle to any Fashion Belt.** \$9.00

ADAGIO



Gold Green

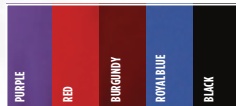
SEQUIN



Red Silver Royal Turquoise

Hand-wash only, cold water, dry flat, no iron. Do not dry clean.

PREFERRED



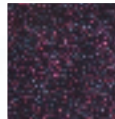
100% machine wash and dry polyester.

STRETCH VELVET



(not shown)

GLITTER KNIT



Galaxy

ITY GLITTER



Red

Black

Hand wash or dry clean only



ADAGIO



SPARKLE



SEQUIN



PREFERRED

Aria Jacket

The Aria is a bolero style jacket, fully lined with long sleeves and gathered shoulders.

Made to order in adult sizes XS - 8XL.

Ships within 4 weeks.

- Preferred** (see colors to left)..... **\$36.00**
- Elegance or Crepe**..... **\$38.00**
- Stretch Velvet** (see colors to left) **\$47.00**
- Galaxy Glitter Knit** (see colors to left)... **\$63.00**

CREPE



ELEGANCE



All fabrics, unless otherwise noted, are 100% machine wash and dry polyester.



Aria Jacket

Stretch Velvet in Black

Shrugs

Our Shrugs are offered in cap sleeve, short sleeve and 3/4 sleeve.

Made to order in adult sizes XS - 8XL.

Ships within 4 weeks.

- Preferred** (see colors to left)..... **\$26.00**
- Elegance or Crepe**..... **\$29.00**
- Stretch Velvet** (see colors to left) **\$33.00**
- Sequin** (see colors to left) **\$39.00**



RHINESTONE ACCENT BELT

Rhinestone Accent Belt

Faille Satin ribbon with black Velcro closure.

Made to order in adult sizes 2 through 40

Ships within 4 weeks.

\$15.00



Shrug in Purple and Black Preferred fabric.

The Quinn Polo Package

- › UNISEX
- › CASUAL
- › AFFORDABLE



MEN'S WEAR

A. The **Quinn Polo Package** is our simplest offering for casual, affordable men's wear. The open collar v-neck shirt has short sleeves and is made of our wrinkle-resistant preferred fabric. Machine wash/dry. Available in sizes XS-8XL. Package includes your choice of pleated or flat-front com-fit tuxedo pants.

Ships within four weeks.

Quinn Polo Only / \$26.00

Unisex Quinn Polo Package (with Com-Fit Pants) / \$42.00

PREFERRED



All fabrics and colors ship within four weeks.

All fabrics, unless otherwise noted, are 100% machine wash and dry polyester.

Women's Quinn Polo Package with Circle Skirt / \$52.00
(See Page 43)



TUXEDO PACKAGES



A
Basic

Slim-Fit

B

REDI-SHIP

MEN'S WEAR

A. Basic Tuxedo Package
Your choice of a notch or peak lapel coat. Com-Fit pleated or flat front adjustable waist tuxedo pants, white wing collar shirt and black bow tie and cummerbund.
Basic Tuxedo Package / \$104.00
Notch or Peak Coat Only / \$59.00

B. Slim-Fit Tuxedo Package
Our most updated menswear look includes a slim-fit notch tuxedo coat, slim-fit flat front tuxedo pants, a fitted microfiber laydown collar dress shirt, and your choice of black bow tie/cummerbund or black skinny Windsor tie.

Ships within four weeks.

Slim-Fit Tuxedo Package / \$124.00

Slim-Fit Notch Tuxedo Coat / \$69.00

Slim-Fit Flat Front Tuxedo Pants / \$36.00

Fitted Microfiber Dress Shirt / \$21.00

C. Deluxe Tuxedo Package
Peak lapel tuxedo coat, flat front buckle adjustable waist tuxedo pants, laydown collar pleated shirt and skinny or standard black Windsor tie.

Deluxe Tuxedo Package / \$114.00

D. Super Tuxedo Package
Your choice of a notch or peak lapel coat, pleated or flat front adjustable waist tuxedo pants, wing collar or laydown collar shirt, five-button satin signature full-back vest, Windsor or bow tie. Accessories available in 7 colors.

Super Tuxedo Package / \$124.00

VEST & WINDSOR TIE COLORS



C
Deluxe

D
Super

REDI-SHIP

SUIT PACKAGES



Modern Fit Coat & Pants



Modern Fit Suit Package



REDI-SHIP

MEN'S WEAR

A. Modern-Fit Coat and Pants
 Black polyester 2-button suit coat with Flex-Fit adjustable waist flat front dress pants.
Coat and Pants / \$86.00
Matching 5-button Vest / \$24.00

B. Modern-Fit Suit Package
 Black or grey 2-button poly, Modern-Fit suit coat, matching flat front Flex-Fit adjustable waist dress pants, black or white poly/cotton dress shirt and your choice of color Windsor Tie.
Modern Fit 2-Button Suit Package / \$102.00

C. Grey Suit
 Modern-Fit grey polyester 2-button suit coat with matching Flex-Fit adjustable waist flat front dress pants.
Grey Suit / \$86.00
Matching 5-button Vest / \$24.00

VEST & WINDSOR TIE COLORS



Grey Suit



REDI-SHIP

MEN'S WEAR PACKAGES

BASIC PACKAGE



REDI-SHIP

SIGNATURE PACKAGE

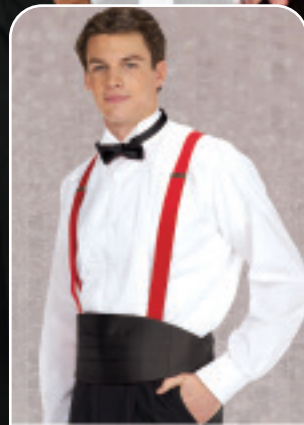


REDI-SHIP

DELUXE SIGNATURE PACKAGE



REDI-SHIP



Add Suspenders
for only
\$12.00

MEN'S WEAR

SHOW PACKAGE



REDI-SHIP

A. Basic Package

Includes white wing collar shirt, black cummerbund & bow tie and Com-Fit adjustable waist tuxedo pants.

Basic Package / \$48.00

B. Signature Packages

Includes black 5-button satin signature full back vest, Com-Fit adjustable waist tuxedo pants, white wing collar shirt, black bow tie.

Signature Package / \$64.00

C. Deluxe Signature Package

Includes black 5-button satin signature full back vest, laydown collar shirt, black Windsor tie and Com-Fit adjustable waist tuxedo pants.

Deluxe Signature Package / \$72.00

D. Show Package

Includes your choice of black or white dress shirt, any color Windsor tie, and black or grey Flex-Fit adjustable waist dress pants.

Show Package / \$48.00

VEST & WINDSOR TIE COLORS



MEN'S WEAR PACKAGES



A POLY TAIL TUXEDO

REDI-SHIP

B SHAWL DINNER JACKET



MEN'S WEAR

BLAZERS

A. Poly Tail Tuxedo Package

Includes Poly tail coat, pleated Com-Fit adjustable waist tuxedo pants, white wing collar shirt, white signature satin full back vest, white satin bow tie.

Poly Tail Tuxedo Package / \$156.00

Poly Tail Coat / \$94.00

Com-Fit pleated adjustable waist tuxedo pants / \$26.00

Signature full back satin vest / \$26.00

White wing collar shirt / \$17.00

Satin bow tie / \$3.50

B. White Shawl Dinner Jacket

White polyester dinner jacket with shawl lapel and single button closure.

Ships within four weeks.

White Shawl Dinner Jacket / \$119.00

C. Blazers

Traditional 2 button, 100% polyester blazers with brass buttons, functional flap and inside pockets. Available in red or navy blue in adult and children's sizes. Machine wash/hang to dry.

Ships within four weeks.

Blazer / \$64.00

Grey or black Flex-Fit Dress Pants / \$26.00

White Dress Shirt / \$17.00

Windsor Tie / \$11.00



VEST & WINDSOR TIE COLORS



SIGNATURE VEST



REDI-SHIP

Signature Five-Button, full back vests in 13 vibrant colors.

Coordinate your group's colors or simply add a splash of color from this fun selection. Available in adult and children's sizes.

- Adult and children's vests . . . \$26.00**
- Matching Satin banded Windsor tie \$11.00**
- Matching 2" Satin banded bow tie \$3.50**

Colors with white adjustable back:
Silver, Gold, White, Hot Pink

Colors with black adjustable back:
Black, Purple, Royal Blue, Burgundy, Red, Plum, Navy, Hunter Green, Turquoise

Long lengths available upon request in black only.



Stay connected with us through Social Media



@TuxedoWholesaler

OVATION VEST

Perfectly match your group's Crepe, Elegance, Sequin and Glitter knit fabric gowns with our Ovation full-back vest. This five-button vest has a black back with elastic side adjusters. Available in adult sizes XS-6XL.

Ships within for weeks.

- Elegance or Crepe..... \$49.00**
- Sequin \$57.00**
- Glitter Knit \$60.00**
- Ity Glitter..... \$65.00**

CREPE

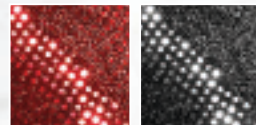


ELEGANCE

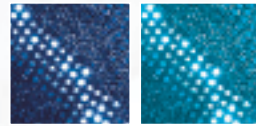


100% machine wash and dry polyester.

SEQUIN



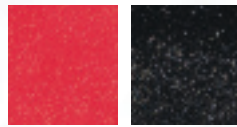
Red Silver



Royal Turquoise

Hand-wash only, cold water, dry flat, no iron. Do not dry clean.

ITY GLITTER



Red Black

GLITTER KNIT



Galaxy
Hand wash/Dry clean only



Bella Show Choir dress
page 51



KEYNOTE VEST



A great uniform option for everyone!

The keynote vest is beautiful, durable and easy to maintain. Made from 100% sturdy poly-gabardine, this vest is fully lined with matching front and back design. It features a four-button closure, black lapels and adjustment tabs on the side. Lab dipped colors guarantee consistency from year to year.

Made to order in children's sizes 26-42 in short, regular and long lengths. Adult sizes 28-64 offered in short, regular and long lengths, XS-8XL. Extra long, portly and special needs sizes also available. Machine wash, Tumble dry.

\$45.00

The Keynote Vest is also available as a rental package...see page 72.

SEPARATES SHIRTS

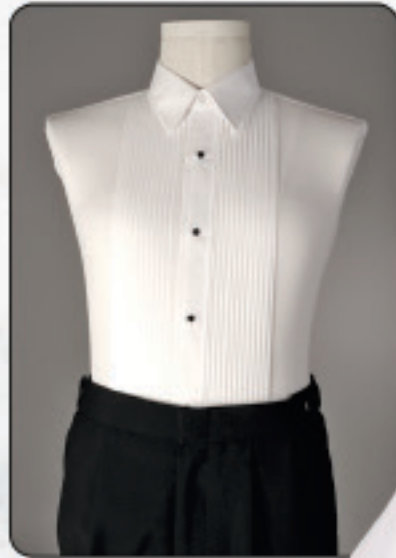


Wing Collar Shirt
1/4" pleated, Poly Cotton.
Machine wash and dry.
Adult & children's sizes.

- White** \$17.00
- Fitted White** \$18.00
- Black** \$19.00



Microfiber Fitted Dress Shirt \$21.00
Fitted Microfiber shirt available in Black or White.
Machine wash and dry. Adult sizes.



Laydown Collar Shirt
1/4" pleated, Poly Cotton, in White. Machine wash and dry.
Adult & children's sizes.

- White** \$17.00
- Fitted White** \$18.00



Pique Wing Collar Shirt \$30.00
Poly microfiber Pique Vest Front \$40.00
Poly microfiber Pique Bow Tie \$10.00
The Pique wing collar shirt is our only shirt without a collar extender.



Ladies Wing Collar Blouse \$17.00
1/4" pleated, Poly Cotton, in White.
Machine wash and dry.
Sizes 2 thru 26



Dress Shirts
Long sleeve, breast pocket, Poly Cotton.
Machine wash and dry.
Adult & children's sizes.
Dress Shirt, white \$17.00
Dress Shirt, black \$18.00

SEPARATES PANTS



PLEATED PANTS



100% poly Buckle Adjustable Waist Pleated Tuxedo Pants \$29.00



100% poly Com-Fit Adjustable Waist Pleated Tuxedo Pants \$26.00

FLAT FRONT PANTS



100% poly Buckle Adjustable Waist Flat Front Tuxedo Pants \$29.00



100% poly Com-Fit Adjustable Waist Flat Front Tuxedo Pants \$26.00



100% poly Flex-Fit Adjustable Waist Flat Front Dress Pants, Grey .. \$26.00



100% poly Flex-Fit Adjustable Waist Flat Front Dress Pants, Black .. \$26.00



Our most popular Com-Fit adjustable waist tuxedo pants come with elastic adjusters on the inside. They are sized using the exact waist measurement, and expand an additional two inches. Available in both flat front and pleated options in the following sizes:

- Children's** | 22, 24, 26
- Men's** | 26 thru 35 in even and odd sizes
- Men's** | 36 thru 60 in even sizes only
- Women's** | 2 thru 28

Your Choice \$26.00

RENTAL PROGRAM

School year long group rentals

This is an affordable and efficient way to outfit your group in quality formal uniforms. Rent from September 1st thru June 1st or any period in between for one low price. Exchange sizes as often as needed, all you pay is the freight.

This program is designed for groups and requires a guarantee of return or replacement. Not available to individuals.

KEYNOTE VEST PACKAGE



A
TAILS PACKAGE



B

C

D

A. Rental Tails Package
Perfect for conductors!
Package includes tail coat, adjustable waist tuxedo pants, wing collar shirt, white vest front and bow tie.

Rental Tails Package / \$66.00

B. Rental Keynote Vest
Package includes red, blue or black vest, men's or women's adjustable waist tuxedo pants, white wing collar shirt or blouse and black bow tie.

Rental Keynote Vest Package / \$42.00

Rental Vest Only / \$18.00

C. Rental Poly Peak Package with Cummerbund and Bow Tie
Includes poly peak lapel coat, adjustable waist tuxedo pants, white wing collar shirt, black cummerbund and bow tie.

Rental Poly Peak Package / \$58.00

Rental Coat Only / \$40.00

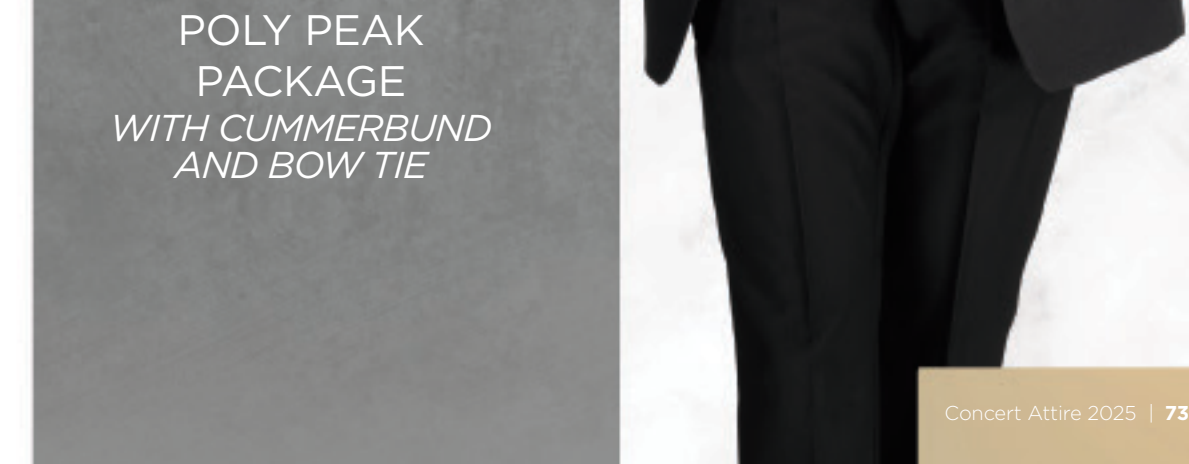
Rental Coat and Pants Only / \$52.00

D. Rental Poly Peak Package with Vest and Bow Tie
Includes poly peak lapel coat, adjustable waist tuxedo pants, white wing collar shirt, black vest front and bow tie.

Rental Poly Peak Package with Vest and Bow Tie / \$62.00



POLY PEAK PACKAGE WITH VEST



POLY PEAK PACKAGE WITH CUMMERBUND AND BOW TIE

ACCESSORIES



REDI-SHIP



Banded Windsor Ties \$11.00



Bow Ties



- Set \$11.00**
- Tie only \$3.50**
- Bund only \$7.50**



Cummerbunds



**Skinny Windsor Tie
Black only \$11.00**



Lace Up Shoes

Lace up oxfords with a black patent leather and cushioned inner sole. The sole and upper are glued and stitched for durability.

Available in sizes 6-15 medium and 8-13 wide

\$48.00



Clip on Suspenders . . \$12.00

Colors available: Black, Red, Royal, White



ACCESSORIES

Silver Studs



Set of 4 studs: Silver or gold metal \$4.00

Gold Studs



Silver Links



Set of 2 Links: Silver or gold metal \$4.00

Gold Links



Studs, Black Plastic



1 Dozen \$6.00
6 Dozen \$24.00
12 Dozen \$36.00

Button Covers

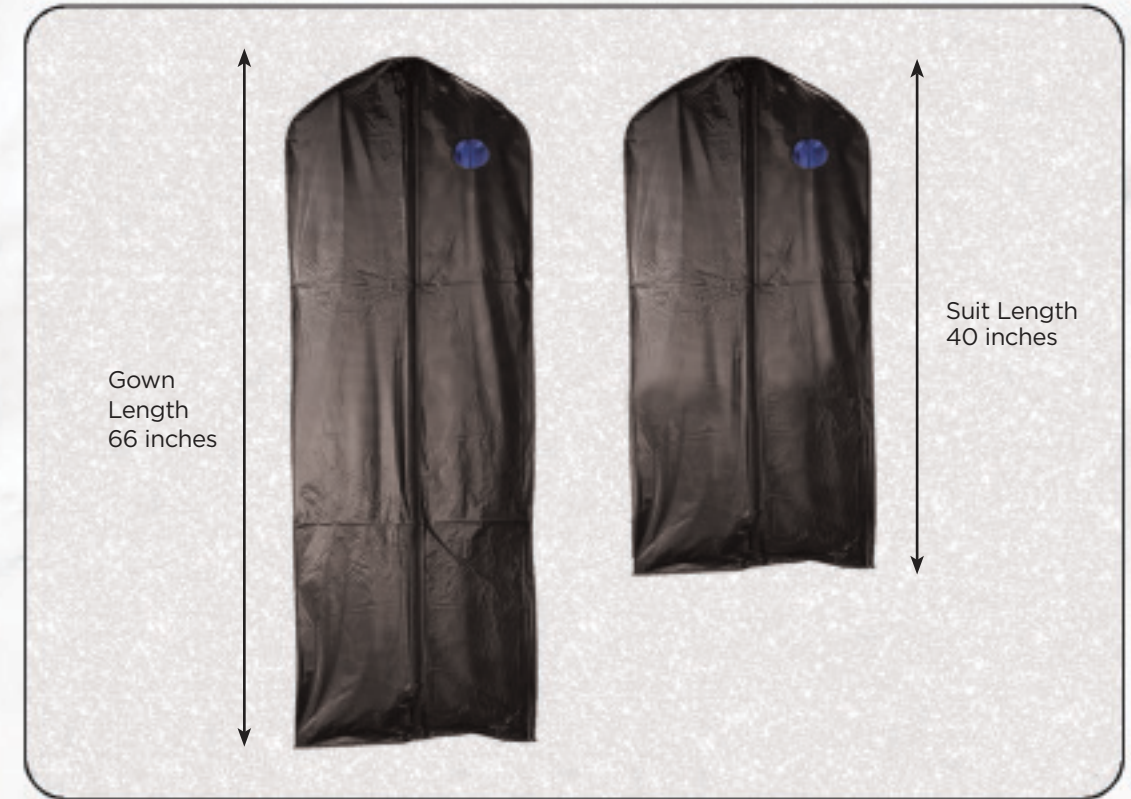


Silver or gold metal . . . \$4.00 each

Crystal Button Covers



Silver or gold metal with crystals \$8.00 each



Black vinyl garment bags with window, no minimum. Clean with damp cloth, do not apply heat

40" Suit Bag \$6.00
66" Gown Bag \$8.00



Fitting Video

Visit our website to watch our 4 minute helpful hints and fitting video at tuxedowholesaler.com/fitting-measurement

How to Measure

Please take measurements over close fitting garments without large belts and accessories. Precise measurements will ensure accurate sizing.



Please watch our helpful measurement tutorial online at www.tuxedowholesaler.com

Men: Required measurements by garment

Coats: Chest, Waist, Sleeve, Overarm
Shirts: Neck, Sleeve
Vests: Chest, Waist
Pants: Waist, Outseam

A. Chest: Measure around the fullest part of the chest keeping the tape parallel to the floor.

B. Overarm: Snug but not tight, wrap the measuring tape around the body at chest level including the arms.

C. Waist: Wrap measuring tape around the natural waist keeping the tape snug.

D. Outseam: With the pants at navel height, measure from the top of the waistband down the outside of the leg to the floor (barefoot).

E. Sleeve: Measure from the center of the back of the neck, over the shoulder, and down to the bottom of the wrist bone.

F. Neck: Gently wrap the measuring tape around the neck, leaving room for 1 finger between neck & tape.

Women: Required measurements by garment

Gowns & Dresses: Bust, Waist, Hip, Height (for children only; neck to floor)

Jackets: Bust, Waist

Skirts: Waist, Hip, Outseam

Blouses: Bust, Waist, Hip

1. Bust: Measure around the fullest part of the chest keeping the tape parallel to the floor.

2. Waist: Wrap measuring tape around the natural waist keeping tape snug.

3. Hip: Wrap measuring tape around the fullest part of the hip, keeping the tape parallel to the floor & snug.

4. Height: Record height in feet and/or inches.

5. Neck to Floor: (for children only) Measure from top of shoulder next to neck over bust to floor.

D. Outseam: At navel height, measure from the top of the waistband down the outside of the leg to the floor (barefoot).



Tuxedo Wholesaler Theatrical

Men's period wear and costume

Tuxedo Wholesaler's Theatrical Division has been providing quality period costumes for the Theatre, Film and Music industries for the past 42 years.

We offer innovative designs for a large number of productions. Choose our designs and fabrics or design your own unique costume. Visit our Accolades section online to see what other designers have imagined, or follow us on Facebook and Instagram.



Find great bargains on both rentals and off-rental sales in our Outlet Store.

A large selection of closeout sales are also available for discontinued and irregular formal wear, gowns, dresses and theatrical costumes.

Visit us today at www.tuxedowholesaler.com

Tuxedo Wholesaler[®]

1331 West Melinda Lane
Phoenix, AZ 85027

Toll Free: 800-828-2802 | Toll Free Fax: 888-456-2233

PRSR STD
US POSTAGE PAID
BOLINGBROOK, IL
PERMIT# 1535



**CONCERT
ATTIRE**
BY TUXEDO WHOLESALER



GET IT FAST!

REDI-SHIP selections
are available throughout
the catalog.

**Look for the flying
box logo.**

tuxedowholesaler.com



Tuxedo Wholesaler®

1331 West Melinda Lane
Phoenix, AZ 85027

Measurement Form Men

Please use the "How to Measure" instructions in our catalog and on our website.

Phone Toll Free: 800-828-2802
Fax Toll Free: 888-456-2233

General Information

Complete details for all the subjects below are available online at www.tuxedowholesaler.com/concertattire_info.html

Please include your group name, contact person and phone on this form.

Group:		Contact Person:						Phone:	NOTES	OFFICE USE ONLY <i>Leave Grey Area Blank</i>		
MEN		Name	Height	Chest	Overarm	Waist	Outseam	Sleeve		Neck		
1												
2												
3												
4												
5												
6												
7												
8												
9												
10												
11												
12												
13												
14												
15												
16												
17												
18												
19												
20												
21												
22												
23												
24												
25												
26												
27												
28												
29												
30												

*Size chart available online

Rev: 6/10/2023

Options for placing your order:

- Carefully complete the order and measurement forms included here.
- Order **online** at www.tuxedowholesaler.com through our secure website.
- Use our **convenient interactive** order form and measurement form available online. Open the form, fill it out as you take measurements, save to your computer and email it to us at orders@tuxedowholesaler.com.
- FAX** your order toll free to 1-888-456-2233.
- Call:** 1-800-828-2802, 8AM to 4PM, MST.
- Mail:** to Tuxedo Wholesaler, 1331 West Melinda Lane, Phoenix AZ, 85027.

Samples: FREE SHIPPING to you.

Select one or two items, choose a color, fabric and size you wish to see. If your color choice is not available, we will send the item in black, with a color swatch of your desired color. Samples may be obtained with a school purchase order or credit card. Samples need to be returned within 30 days to receive full credit.

Swatches: Fabric and color swatches are available for your review.

Quotes: Written price quotes are available FREE for any of our products. Contact a sales representative at 1-800-828-2802 for assistance.

Payment:

- Prepay by check or money order with your order of \$1500.00 or more and receive a 5% product discount.
- Purchase Order: FAX or mail an official school purchase order. We must receive a signed copy prior to shipment.

Late fees of 2% per month are charged on unpaid balances.
- Credit Cards: We accept MasterCard, Visa, American Express and Discover.

Shipping:

All rates are for the contiguous United States. Shipping charges will be added to your order.

Orders to Alaska, Hawaii and other outlying U.S. areas may be subject to additional shipping charges. Holidays and weekends are not included in the delivery time. All shipping charges will be added and charged at the time your order is placed. All orders process and ship through Phoenix, Arizona.

Ground Shipping:

Standard (7-10 business days) 8% of order, \$15.00 minimum
Express (4-6 business days) 14% of order, \$25.00 minimum
RUSH (2-3 business days) 20% of order, \$45.00 minimum

Call for rates on all other services.

Special Orders and Cuts:

- Extra length gowns will incur an additional \$10.00 charge for each item.
Long Length - accommodates up to 5'10" tall
Extra Long Length - accommodates up to 6'0" tall
- Any sleeve change from an existing pattern is an additional \$10.00 per gown.

Rentals: School year rentals are available for groups only. The rental term is from September 1st, thru June 1st, or any period in between. The rental price is not prorated. Complete rental details are available online. All rental shipping charges will be charged by weight.

Availability: If the gown you ordered in the past is not shown here this year, please check online at www.tuxedowholesaler.com/ConcertAttire.

Exchanges: Exchanges and returns must be made within 30 days from the shipping date, unused, labels intact and unaltered. Returns are subject to a 20% restocking fee.

Please include the orange RA (return authorization) form with your shipment along with your full account name, contact person, address and phone number. Ship any method that allows you to track the package.

Hems: Gowns, skirts and pants come with a finished edge, not hemmed to length.

